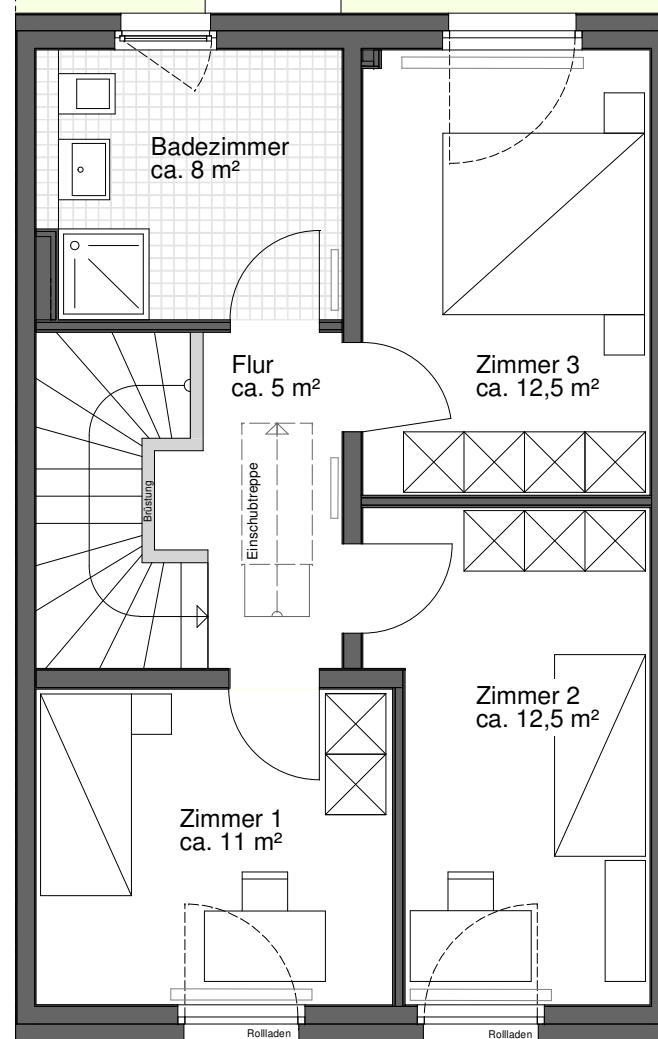
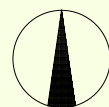
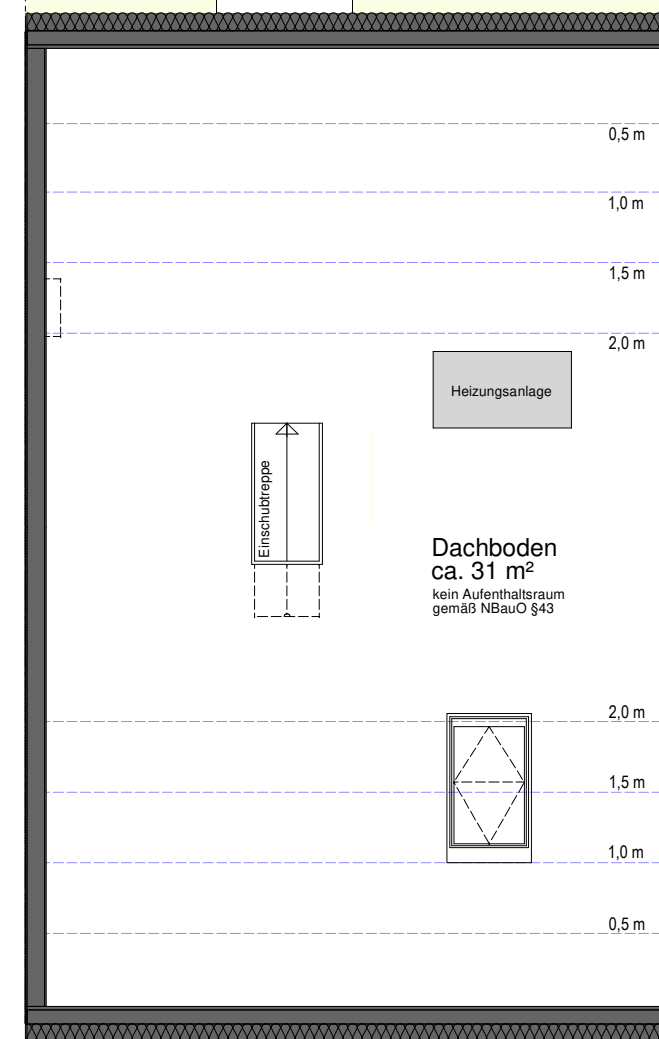


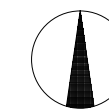
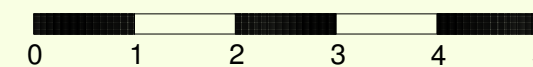
ERDGESCHOSS
Typ BASIS / 4 Zi.
 ca. 54,5 m²



OBERGESCHOSS
Typ BASIS / 4 Zi.
 ca. 49 m²



DACHGESCHOSS
Typ BASIS / 4 Zi.



Reihen-Mittelhaus
Grundrisse 'BASIS'
 - Variante 4 Zimmer -
 ca. 103,5 m² Änderungen u. Irrtümer vorbehalten.

Quartier Harzstraße
 38315 Schladen-Mitte



info@thi-holding.de www.thi-holding.de
 Jägerstraße 16 30167 Hannover
 Tel: 0511-8765 58 -0 Fax: 8765 58 -28

